

1-800-BOLLARDS

The Bollard Experts

10" M50 HIGH SECURITY SHALLOW MOUNT

FMCSR1080 (REMOVABLE)

CARBON STEEL

SELECT DESIRED CARBON STEEL BOLLARD FINISH:

- POWDER COAT RAL # _____
- AS SPECIFIED _____

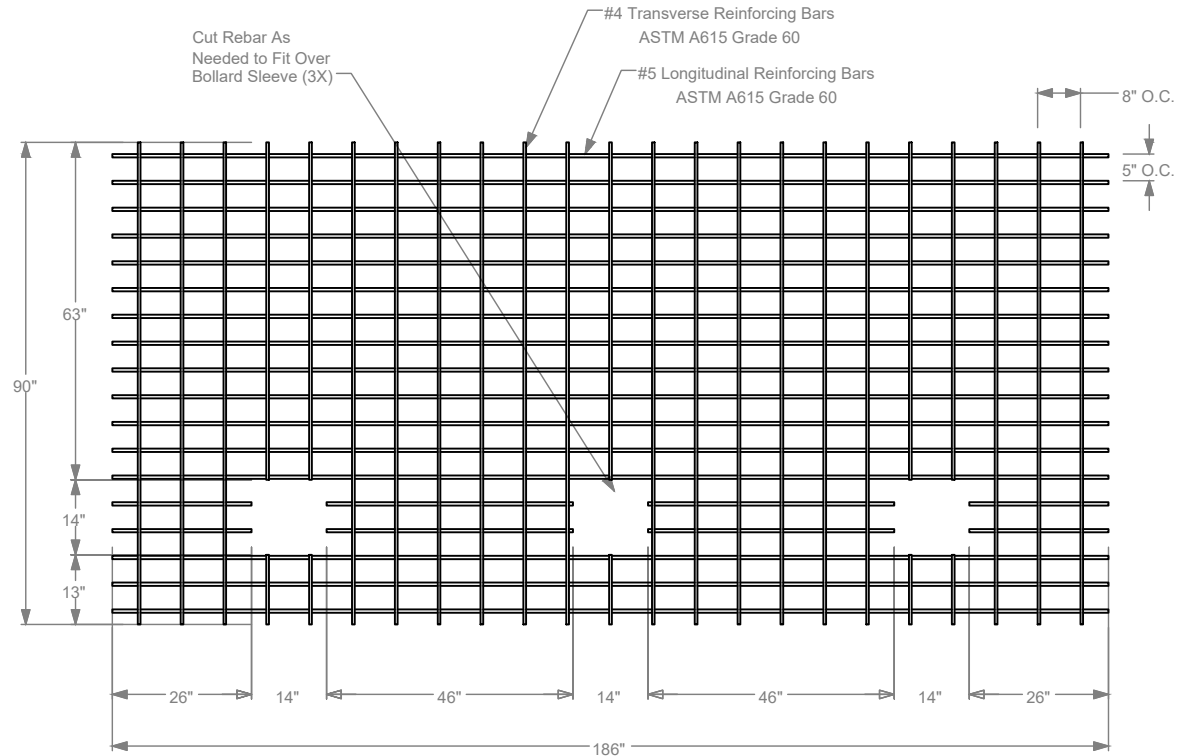
COVER SELECTION

- 304 STAINLESS STEEL
- 316 STAINLESS STEEL

SELECT DESIRED BOLLARD CAP STYLE:

-  DOME (SHOWN)
-  STANDARD FLAT
-  REVEAL
-  SLOPED

Top Reinforcement Mat



REVISIONS			
LTR	DESCRIPTION	DATE	APPVD

COMMENTS			

SPECIFICATIONS
 HEIGHT: 42"
 DIAMETER: 10.74"
 WALL THICKNESS: 0.594"

DOME (SHOWN) STANDARD FLAT REVEAL SLOPED



SERIES NUMBER: XX-S060-XX	CAGE CODE: 6NGJB	REV: 1	DRAWING NUMBER: M50 SHALLOW MOUNT
PRODUCT FAMILY: M50 SHALLOW MOUNT	DRAWN BY: AJA	CHECKED BY:	DRAWING REV:
PRODUCT CLASS: STANDARD OR CUSTOMER DEFINED	PRODUCT LINE: BOLLARD	PRODUCT SUB LINE: SHALLOW MOUNT	SHEET: 1 OF 1
1-800-BOLLARDS, Inc. 10 Hughes Suite A105 Irvine, CA 92618 PHONE: 1-800-BOLLARDS WEB: WWW.1800BOLLARDS.COM EMAIL: INFO@1800BOLLARDS.COM			TITLE: BOLLARD, M50 SHALLOW MOUNT

APPLICATION	
NEXT ASSY	USED ON

1. REVISIONS TO BE COMPLETED IN ACCORDANCE WITH MANUFACTURER'S SPECIFICATIONS.
 2. DO NOT SCALE DRAWING.
 3. THIS DRAWING IS PROVIDED FOR USE BY ARCHITECTS, ENGINEERS, CONTRACTORS, CONSULTANTS AND DESIGN PROFESSIONALS FOR PLANNING PURPOSES ONLY. THIS DRAWING MAY NOT BE USED FOR CONSTRUCTION.
 4. ALL INFORMATION CONTAINED HEREIN WAS CURRENT AT THE TIME OF DEVELOPMENT BUT MUST BE REVIEWED AND APPROVED BY THE PRODUCT MANUFACTURER TO BE CONSIDERED ACCURATE.
 5. CONTRACTOR'S NOTE: FOR PRODUCT AND COMPANY INFORMATION VISIT WWW.1800BOLLARDS.COM AND ENTER REFERENCE NUMBER 504657.

1-800-BOLLARDS

The Bollard Experts

10" M50 HIGH SECURITY SHALLOW MOUNT

FMCSR1080 (REMOVABLE)

CARBON STEEL

SELECT DESIRED CARBON STEEL BOLLARD FINISH:

POWDER COAT RAL # _____

AS SPECIFIED _____

COVER SELECTION

304 STAINLESS STEEL

316 STAINLESS STEEL

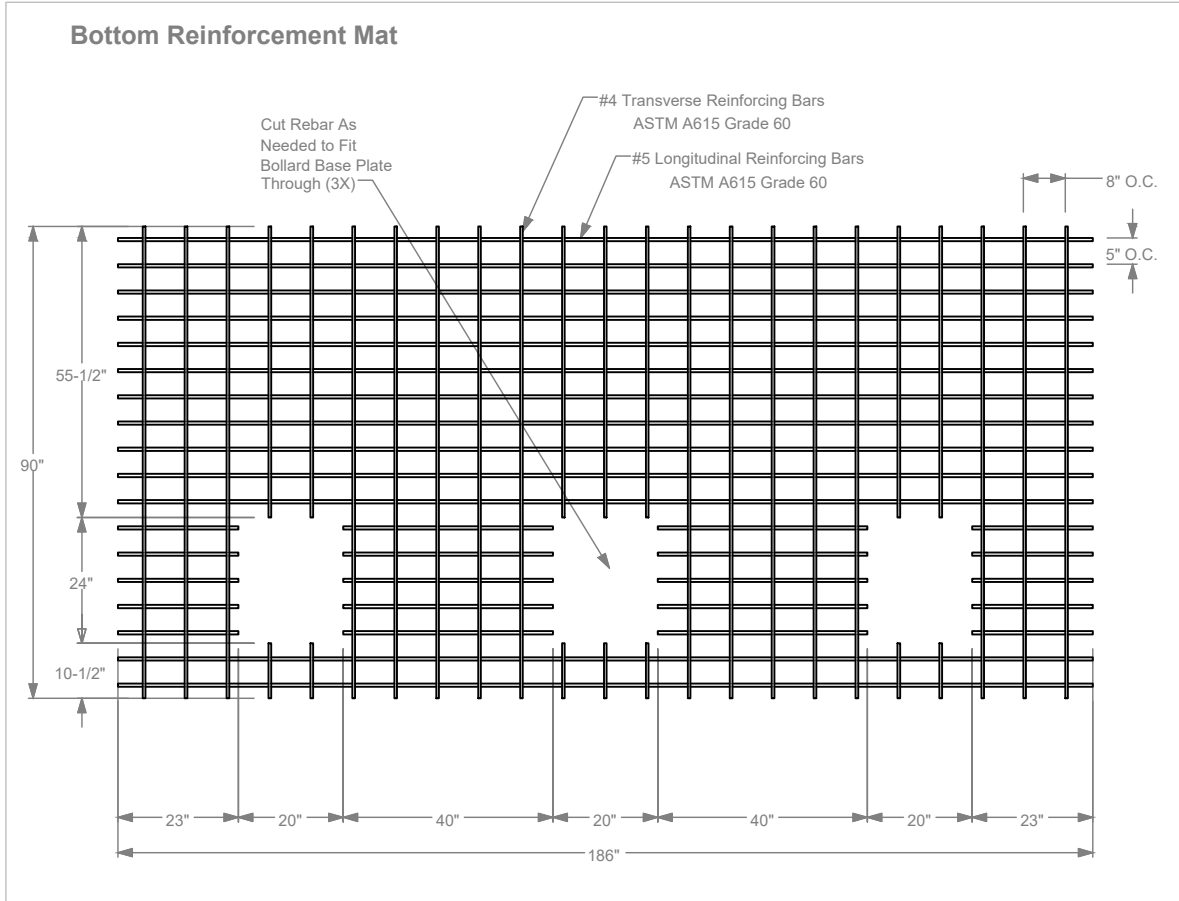
SELECT DESIRED BOLLARD CAP STYLE:

DOME (SHOWN)

STANDARD FLAT

REVEAL

SLOPED



REVISIONS			
LTR	DESCRIPTION	DATE	APPVD

COMMENTS			

SPECIFICATIONS			
HEIGHT: 42"			
DIAMETER: 10.74"			
WALL THICKNESS: 0.594"			

DOME (SHOWN) STANDARD FLAT REVEAL SLOPED



SERIES NUMBER:	XX-S060-XX	CAGE CODE:	6NGJ8	REV:		DRAWING NUMBER:	M50 SHALLOW MOUNT
PRODUCT FAMILY:	M50 SHALLOW MOUNT	DRAWN BY:	AJA	CHECKED BY:		DRAWING REV:	
PRODUCT CLASS:	STANDARD OR CUSTOMER DEFINED	PRODUCT LINE:	BOLLARD	APPROVED BY:		SHEET:	1 OF 1
PRODUCT SUB LINE:	SHALLOW MOUNT	1-800-BOLLARDS, Inc. 10 Hughes Suite A105 Irvine, CA 92618 PHONE: 1-800-BOLLARDS WEB: WWW.1800BOLLARDS.COM EMAIL: INFO@1800BOLLARDS.COM		TITLE:			BOLLARD, M50 SHALLOW MOUNT

APPLICATION	
NEXT ASSY	USED ON